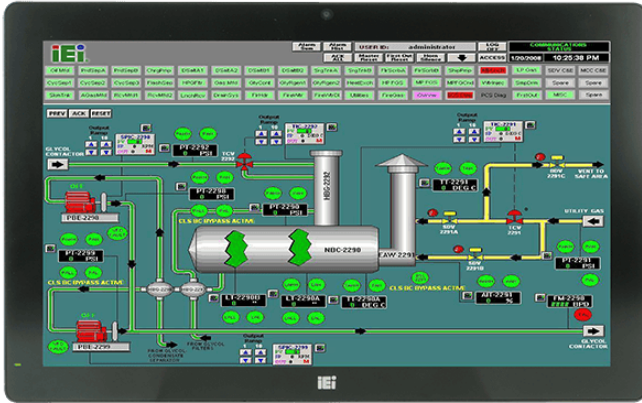


AFL3-W22C-ULT3

Intel® Core™ i5 and Celeron® ULT Processor



Features

- » W21.5" light industrial interactive panel PC
- » 9 V ~ 30 V wide range DC power input
- » Selectable AT/ATX power mode
- » Built-in speakers
- » One mSATA slot
- » IP64 compliant front panel
- » IEI One Key Recovery solution allows you to create rapid OS backup and recovery (suggested with over 4GB storage capacity)

Specifications

System	
CPU	Intel® Core™ i5 and Celeron® ULT Processor
Storage	1 x 2.5" SATA 3Gb/s HDD bay 1 x M.2 M key PCIe storage (2280 or 22110) 1 x mSATA slot
Communication	
Bluetooth	v4.0 (M.2 slot)
Wi-Fi	IEEE 802.11a/b/g/n/ac
I/O Interface	
Ethernet	2 x Intel® I211-AT PCIe GbE controller
I/O Ports and Switches	1 x RS-232 by DB-9 (RI/5V/12V) 1 x RS-232/422/485 by DB-9 (RI/5V/12V) 2 x GbE LAN 4 x USB 3.0 1 x HDMI output 1 x Power switch 1 x Reset button 1 x AT/ATX switch 1 x 9-30V lockable power jack
Audio	AMP 3W + 3W (internal speaker)
Audio Codec	ALC892
RAM	Two 260-pin DDR4 SO-DIMMs (system max.32GB)
Environment	
Operating Temperature	-20°C~50°C
Humidity	10% to 95% (non-condensing)
Storage Temperature	-20°C~60°C
IP Level	IP 64 compliant front panel
Physical Characteristics	
Color	Black C

Mounting	Panel, Wall, Stand and Arm VESA 75mm x 75mm / 100mm x 100mm
Dimensions (LxWxH) (mm)	528 x 336 x 68
Construction Front Panel	PC + ABS Plastic
Weight	
Weight	8.27/11.27
LCD	
Size	21.5"
Resolution	1920 x 1080
Brightness (cd/m ²)	250
Contrast Ratio	1000:1
LCD Color	16.7M
Pixel Pitch (mm)	248.25 (H) x 248.25 (V)
Viewing Angle (H-V)	170°(H) / 160°(V)
Backlight MTBF	30,000 (LED backlight panel)
Touch	
Touch Screen	Projected capacitive type with USB interface
Touch Controller	EETI EXC3180
Other Features	
Microphone	digital microphone
Camera	2-megapixel with low light function
OSD Function	Software OSD
I/O Interface	
I/O Interface	1 x RS-232 (DB-9 (RI/5V/12V))
	1 x RS-422/485 (DB-9 (RI/5V/12V))
	4 x USB 3.2 Gen1x1
	1 x HDMI
	2 x LAN (GbE)
	1 x Reset Button
	1 x Power Switch
	1 x AT/ATX switch
	1 x Power In (DC jack)

Ordering Information

AFL3-W22C-ULT3-i5/PC/4G-R13	Wide 22" 250 cd/m ² 1920x1080 Panel PC with Intel® 14nm 6th Generation Mobile Core™ i5-6300U (15W) on-board Processor (ULT), 1*4GB DDR4 RAM, 802.11a/b/g/n/ac WiFi module, PCAP touch, 2M camera, microphone , with AG, R13
AFL3-W22C-ULT3-C/PC/4G-R13	Wide 22" 250 cd/m ² 1920x1080 Panel PC with withIntel® 14nm 6th Generation Mobile Celeron®3955U (15W) on-board Processor (ULT), 1*4GB DDR4 RAM, 802.11a/b/g/n/ac WiFi module, PCAP touch, 2M camera, microphone,with AG,R13

Packing List

4 x Round head machine screw	6 x Pan head machine screw
1 x Power cord	1 x Power adapter