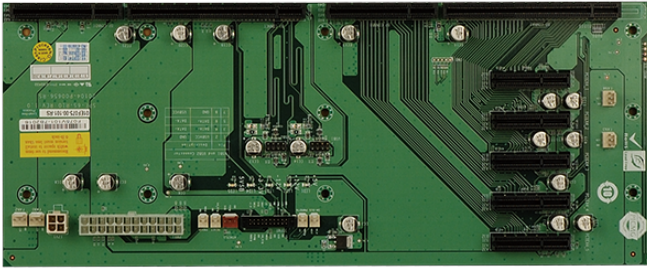


各種産業用パソコン(ボード) > シングルボードコンピュータ > バックプレーン

## SPE-6S

6-Slot PICMG 1.3 PCIe to PCI Bridge Backplane,5 PCIe x4,RoHS



## Features

» 5 x PCIe x4

## Specifications

Physical Characteristics	
Mounting	PAC-106G
	PAC-1000G
I/O Interface	
Expansion	5 x PCIe x4
Power	
Power Supply	24+4-pin ATX

## Ordering Information

SPE-6S-R10	6-Slot PICMG 1.3 PCIe to PCI Bridge Backplane,5 PCIe x4,RoHS
PAC-106GW-R21	6-Slot Full size Chassis,White,W/O PSU,RoHS
PAC-1000GB-R20	6-Slot Full size Chassis,Black,W/O PSU,RoHS