

Sistema embedded > Sistema embedded per digital signage > Serie IDS

IDS-330-ADL-P

Digital Signage System
Ultra Compact Size

Features

» Supported CPUs:

Alder Lake 12th Gen Intel® Core™ Solution (up to 10 cores)

Intel® Core™ i5-1235U (up to 4.4GHz, 10-core, 15W TDP)

Intel® Core™ i7-1255U (up to 4.7GHz, 10-core, 15W TDP)

» Four HDMI™ displays up to 4K resolution

» Two GbE LAN ports

» M.2 B Key, M.2 M Key & M.2 E Key For expansion

» Four USB3.2 GEN2 x1

» CE/FCC compliant

Specifications

Form factor	
SBC Form Factor	» Supported CPUs:
	Alder Lake 12th Gen Intel® Core™ Solution (up to 10 cores)
	Intel® Core™ i5-1235U (up to 4.4GHz, 10-core, 15W TDP)
	Intel® Core™ i7-1255U (up to 4.7GHz, 10-core, 15W TDP)
	» Chipset:
	SoC
	» System Memory:
	LPDDR4X on board 8GB (max 16GB)
	» Power:
	Power Input: DC JACK: 12 VDC
	Power Consumption: 12V@4.25A (Intel i7-1255U With 8GB DDR4 Memory)
I/O Interface	
I/O Ports	» USB:
	4 x USB 3.2 Gen 2
	» Ethernet:
	2 x 2.5 GbE by Intel® I225V (colay I225LM)
	» Display:
	4 x HDMI™ 1.4b with CEC (up to 3096 x 2160@30Hz)
	» TPM:
	Support Intel PTT
	» Watchdog Timer:
	Programmable 1 ~ 255 sec/min
Expansion Slots	
Expansion Slots	» M.2:
	1 x M.2 E Key 2230 for WIFI & BT (optional)
	1 x M.2 M Key (PCIe x4) 2280
	1 x M.2 B key 3042/52/80 with SIM slot (PCIex1/USB2.0/SATA)
System	
Cooling method / System Fan	Fanless
	4-pin external system fan connector
Drive Bays	N/A

Indicator&Buttons	
Buttons	1 x Power button
	1 x Reset button
Indicators	1 x Power LED (green)
	1 x HDD LED (yellow)
Physical Characteristics	
Construction	Extruded aluminum alloy
Color	
Color	Black
Dimensions	
Dimensions	176 x 115.6 x 55.2
Weight	
Weight	0.94 / 1.7 kg
Environment	
Operating Temperature	-10°C ~ 40°C with air flow
Humidity	10% ~ 95% non-condensing
Operating Vibration	10-500 Hz, 1.04 Grms, random, 1 hr/axis
Operating Shock	Half-sine wave shock 5G, 11ms, 100 shocks per axis
Safety & EMC	CE/FCC compliant
OS Support	
OS Support	Microsoft Windows 10 / Windows 11, Linux

Ordering Information

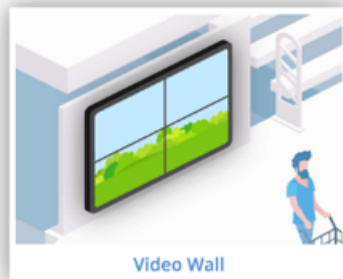
IDS-330-ADL-P-i7C-R10	Fanless embedded system with Intel®Alder Lake-P i7, on-board 8GB LPDDR4x memory, four HDMI™ display, 12V DC, two 2.5GbE and RoHS
IDS-330-ADL-P-i5C-R10	Fanless embedded system with Intel®Alder Lake-P i5, on-board 8GB LPDDR4x memory, four HDMI™ display, 12V DC, two 2.5GbE and RoHS

Packing List

1 x Power Adapter	1 x Power Cord
1 x Screw pack	

Engage your audience by taking digital signage to the next level

With the peak of the global pandemic behind us and lockdown restrictions have lifted, consumer foot traffic into physical stores, shopping malls and restaurants is on the increase. Retail businesses need to offer better customer shopping experience to resist the convenience and prices of e-commerce, which means the presence of digital displays is taking a more important part than ever in retail industry. Currently, not only can digital signage offer eye-catching graphics and visual effects to grab people's attention, but it also can generate real-time and context-dedicated content by collecting customers' data or provide interactive function. Digital signage applications can enhance customers' experiences, and provide an eco-friendly and sustainable alternative, avoiding paper wastage and reducing power usage.



Stand out from competitive retail industry with right digital signage player

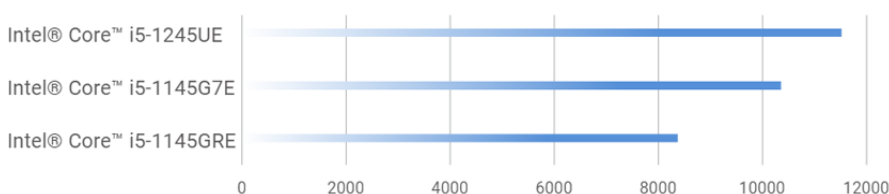
Built with 12th Gen Intel® Core™ processors (codenamed Alder Lake), the small footprint digital signage player IDS-330 is exclusively designed for graphic-intensive digital signage applications and video walls by virtue of its four HDMI™ displays, stunning 4K resolution and great acceleration in graphic workloads powered by Intel® Iris® Xe. The IDS-330 supports multiple remote management options, including wireless connection and Intel vPro® Enterprise technology, for less maintenance efforts and more effective management. When it comes to the reliability, its fanless design reduces risks of any system downtime, making IDS-330 ideal for running in outdoor environment.



Superior Performance with 12th Gen Intel® Core™ processors

The IDS-330 is powered by 12th Gen Intel® Core™ i5/i7 processors, which delivers up to 33% better CPU performance and 43% higher single thread rating than the former generation thanks to its unique combination of two Performance-cores and eight Efficient-cores.

11th Gen Intel® Core™ VS. 12th Gen Intel® Core™ *

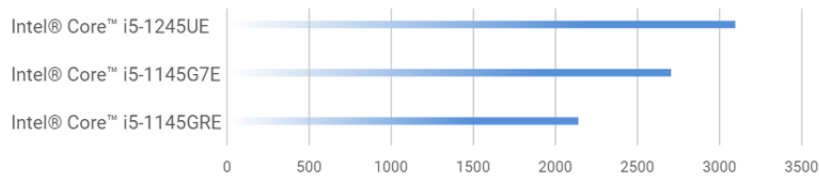


Up to

33%

higher CPU performance

11th Gen Intel® Core™ VS. 12th Gen Intel® Core™ *



Up to

43%

higher CPU Single Thread Rating

* Source: PassMark Software (<https://www.passmark.com/>)

Based on the hybrid core architecture, the Performance-core takes care heavier processing loads and graphically intensive workloads, while the Efficient-core delivers multithreaded performance for background tasks. Therefore, 12th Gen Intel® Core™ processors are capable of handling highly-threaded tasks and graphics-intensive workloads.

Tailor-made for high-end digital displays

1. Quad Independent HDMI™ displays

The IDS-330 comes with four independent HDMI™ 2.0 outputs to support four independent displays in stunning 4K quality. It is ideal for deployment of 4K video wall in high-end department stores, luxury hotel lobbies, headquarters buildings, and other public spaces, allowing businesses to drive multiple screens from a single device.



2. Visual explosions and AI workloads acceleration with Intel® Iris® Xe Graphics

The integrated GPU based on Intel® Iris® Xe architecture provides up to 96 Execution Units (EUs) and impressive 4K image and video quality to generate life-like and immersive visual content and targeted messages for digital signage applications

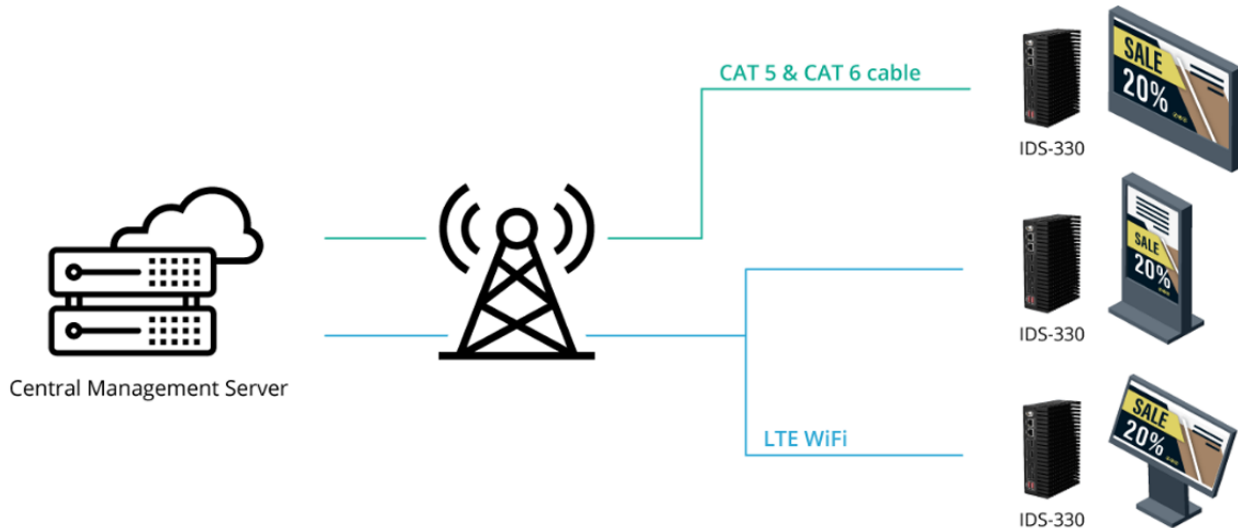
Additionally, the IDS-330 features the built-in technology Intel® Deep Learning Boost that can accelerate complex AI workloads from data analytics and machine learning to image recognition to facilitate customized and interactive content creation on digital signage.



Remote management capabilities for better IT/OT efficiency

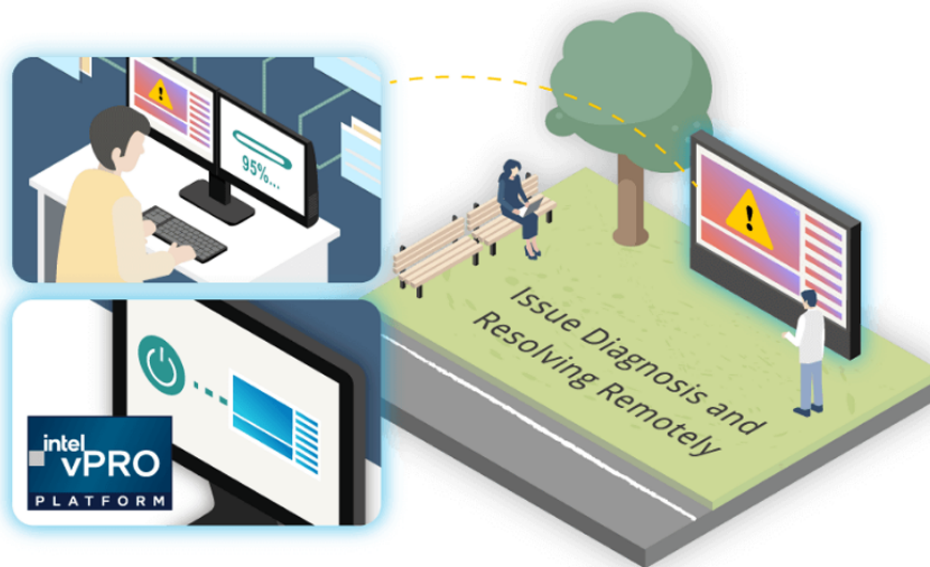
Wireless connection for instant online content delivery

The communication capability of digital signage players is very important. The IDS-330 is equipped with dual 2.5GbE LAN ports and one M.2 B Key with SIM slot for wireless connection to easily enable advanced remote management functions. In addition to provide 2.5 times faster in network speed than standard Ethernet port (1GbE), the IDS-330 can also act as a cloud-based gateway to manage remotely via mobile devices and deliver visual content through LTE/WiFi connectivity or wired connection. With remote management feature, the IDS-330 can serve both indoor and outdoor digital signage needs.



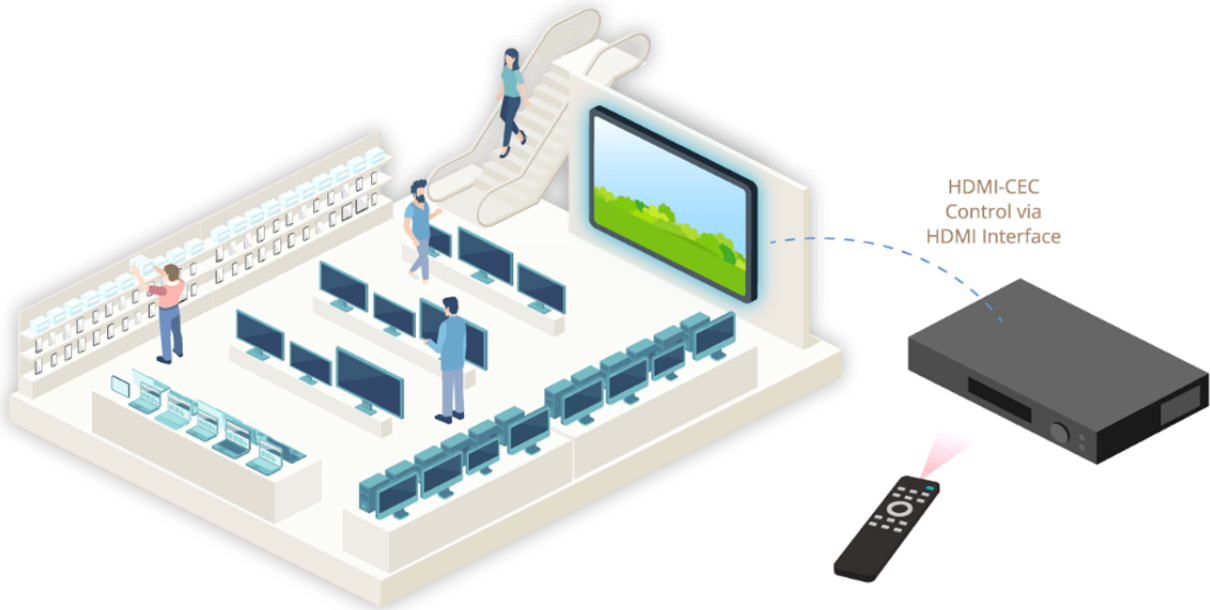
Remote manageability and improved security powered by Intel vPro® Enterprise Platform

Thanks to built-in 12th Gen Intel® Core™ i5/i7 processors, this compact digital signage player brings an exclusive technology, Intel® vPro® Enterprise platform, for modern manageability and improved stability. This technology provides hardware-based security feature to protect the system against attacks, as well as remote management functions that allows IT team to manage remotely digital signage even when devices are powered off or out of band. This results in minimized need for on-site maintenance, reduced operation costs and less work interruptions, which translate into IT efficiency for business users.



Supports HDMI™ -CEC command

The IDS-330 also supports HDMI™ -CEC function that allows to remotely turn on/off multiple displays* with only one remote control for easier management and energy saving. *Displays also must have HDMI™ -CEC feature



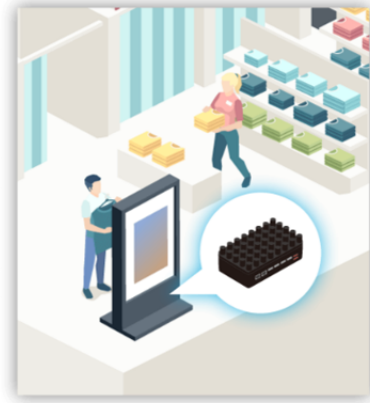
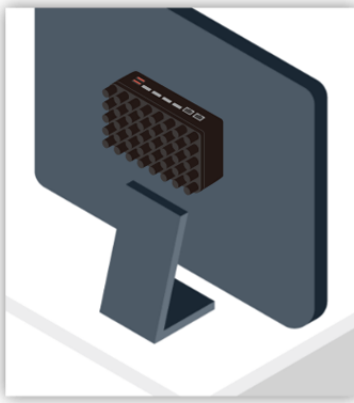
Higher durability and reliability for 7/24 operation

The reliability definitely matters for digital signage players since most of digital displays including video walls and DOOH advertising (Digital Out-of-home Advertising) require non-stop operation. 12th Gen Intel® Core™ processors, with TDP of only up to 28 watts, contribute energy-efficient feature to ensure reliable performance for continuous visual content delivery. With fanless design, there are fewer moving parts to cause potential damages to other electronic components. The simple lack of a fan also prevents dust and debris that can harm the PC from building up in the system.

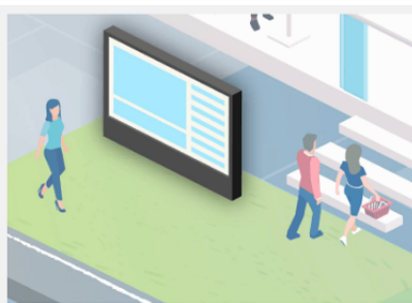


Ease of installation in limited Space

In addition to the palm-size design, The IDS-330 comes with VESA mounts option that allows for easy and simplified installation in any convenient surface-even on the back of the display-where the space is atypical and restricted.



Multi-scene Application



DOOH
(Digital Out-of-home Advertising)

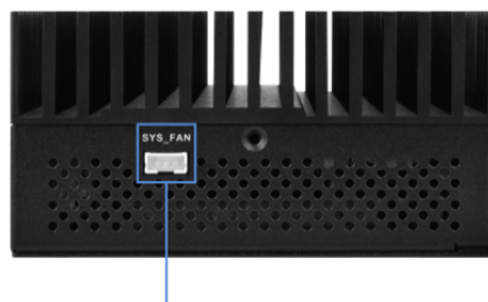
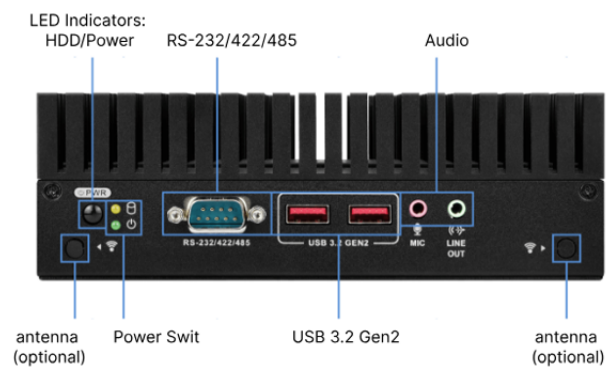
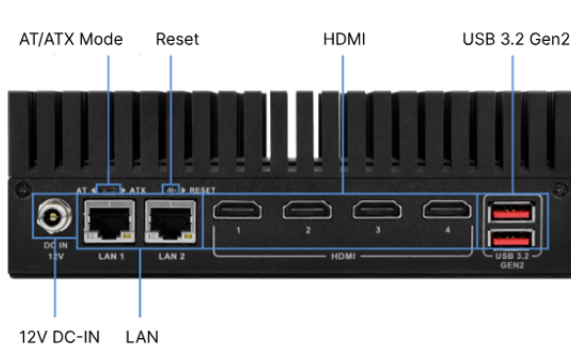


Video Wall



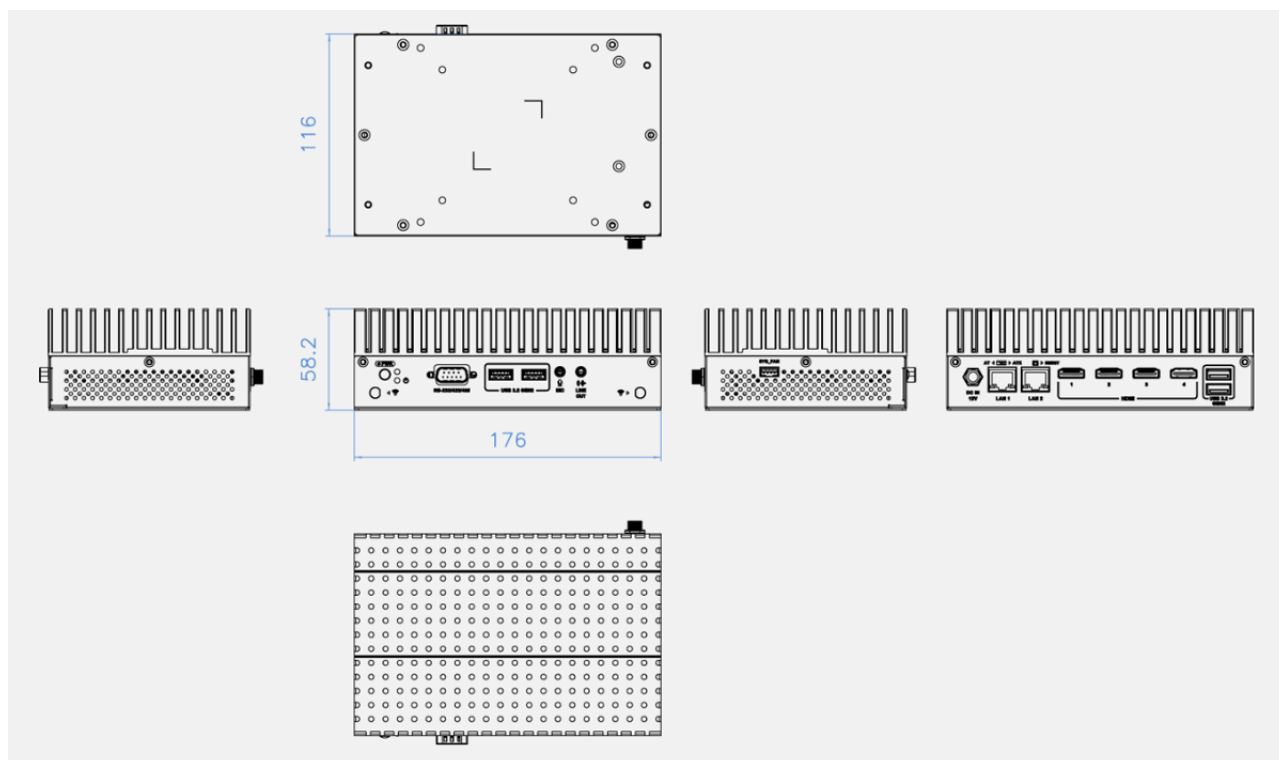
Interactive Digital Signage

Hardware I/O



SYS_FAN

Dimensions



Related Products



IDS-310-AL



TANGO-3010