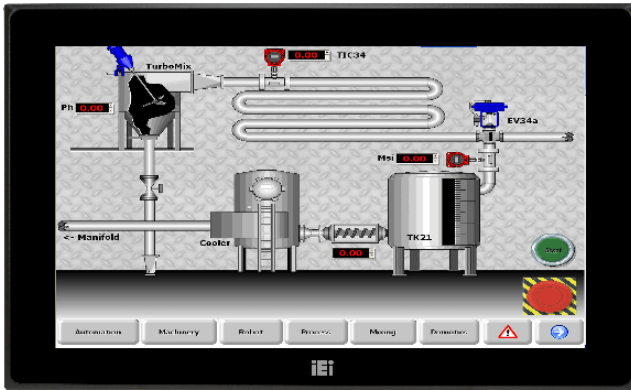


DM-FW15A

15.6" DM-F IP65 Industrial Monitor

Features

- » Robust IP65 aluminum front bezel
- » Aesthetic ultra-thin bezel for seamless panel mount installation
- » DC input
- » DP/VGA flexible video input solution
- » PCAP AG coating touch
- » Wide temperature support



Specifications

| Display | |
|--------------------------|--------------------------------------------|
| Backlight MTBF(hrs) | 50000 |
| Brightness(cd/m2) | 400 |
| Contrast Ratio | 500:1 |
| LCD Size | 15.6" (16:9) |
| Max Resolution | 1366 (W) X 768 (H) |
| Environment | |
| Humidity | 10% to 95% (non-condensing) |
| IP Level | IP 65 compliant front panel |
| Operating Temperature | -20°C ~ 60°C |
| Storage Temperature | -20°C ~ 70°C |
| LCD | |
| LCD Color | 16.2M |
| Pixel Pitch (mm) | 0.252 x 0.252 |
| Viewing Angle (H-V) | 170° / 160° |
| Physical Characteristics | |
| Cutout Dimensions | 379.1 x 232.3 |
| Dimensions (LxWxH) (mm) | 400.1 x 253.3 x 52.9 |
| Power | |
| Power adapter | 9V~36V DC |
| Touch | |
| Touch Controller | EETI EXC3 series |
| Touch Screen | 10-point projected capacitive touch window |
| Weight | |
| Weight | 4 / 6.5 |
| I/O Interface | |
| I/O Interface | 1 x DC Input Jack(9~36V (Lockable)) |
| | 1 x Display Port |
| | 1 x HDMI |

| | |
|--|-------------------------------------|
| | 1 x Power In(9V-36V terminal block) |
| | 1 x USB 2.0(touch) |
| | 1 x VGA |

Ordering Information

| | |
|-----------------|-------------------------------------------------------------------------------------------------------------------------------------|
| DM-FW15A/PC-R10 | 15.6" 400 cd/m ² 1366x768 LCD monitor, Aluminum front panel, Black color, W/ USB PCAP touch screen, 9 ~36V DC input, R10 |
|-----------------|-------------------------------------------------------------------------------------------------------------------------------------|

Packing List

| | |
|---------------|---------------|
| 1 x USB Cable | 1 x VGA Cable |
|---------------|---------------|