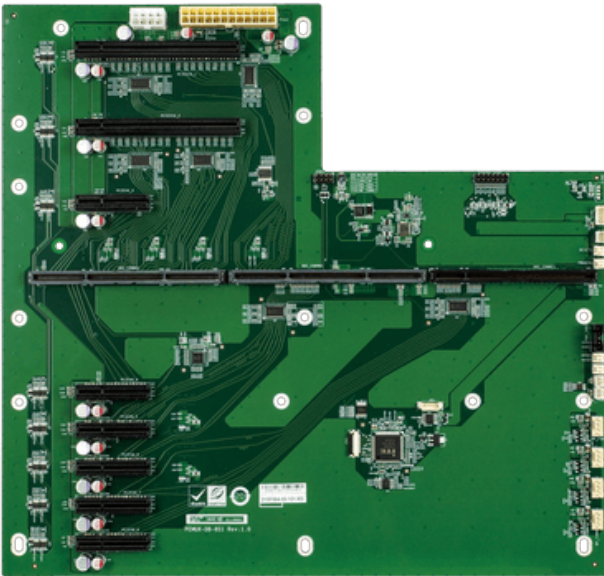


# PEMUX-DB-8S1

1-Slot PEMUX backplane, 2 PCIe Gen 3.0 x16 w/ x16 slot, 6 PCIe Gen3.0 x4 w/ x4 slos, and RoHS



## Features

1-Slot PEMUX backplane, 2 PCIe Gen 3.0 x16 w/ x16 slot, 6 PCIe Gen3.0 x4 w/ x4 slos, and RoHS

## Specifications

Physical Characteristics	
Dimensions (LxWxH) (mm)	327.69 X 311.10
I/O Interface	
Expansion	2 x PCIe x16 6 x PCIe x4
Power	
Power Supply	ATX power, 24+8pin ATX

## Ordering Information

PEMUX-DB-8S1-R10	1-Slot PEMUX backplane, 2 PCIe Gen 3.0 x16 w/ x16 slot, 6 PCIe Gen3.0 x4 w/ x4 slos, and RoHS
------------------	---