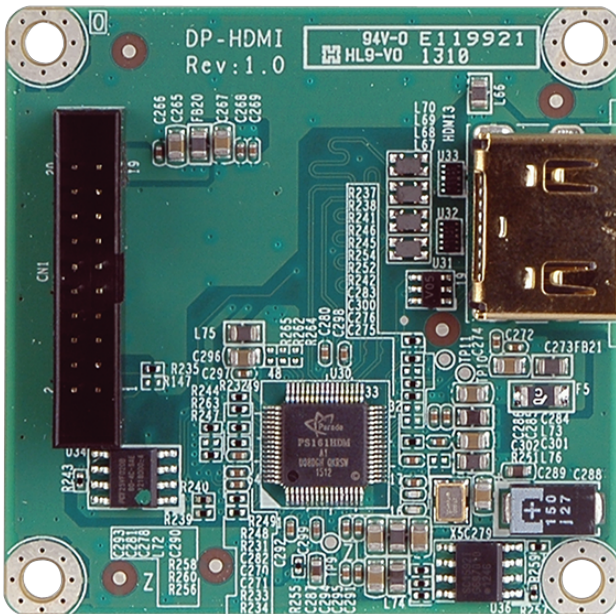


## DP-HDMI

DisplayPort to HDMI™ 1.3a Converter Board (for IEI iDP DP-HDMI™-R10 connector)



### Features

- » DisplayPort to HDMI™ 1.3a output
- » Support up to 1920x1200 resolution

### Specifications

Physical Characteristics	
Dimensions (LxWxH) (mm)	50 X 50
I/O Interface	
Display Output	1 x HDMI™ :1.3a
Environment	
Operating Temperature	-10°C ~ 60°C
Humidity	5% ~ 95%, non-condensing

### Ordering Information

DP-HDMI™-R10	DisplayPort to HDMI™ converter board (For iEi IDP connector)
--------------	--