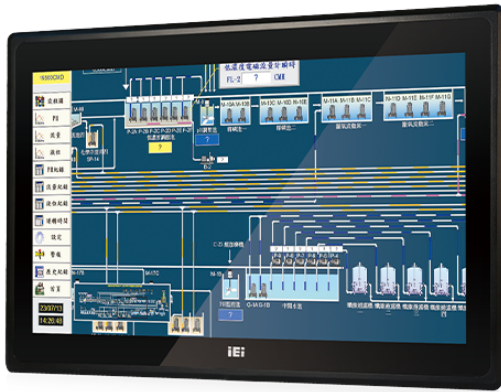


DM-F22A

17"~24" DM-F IP65 Industrial Monitor



Features

- » Robust IP65 aluminum front bezel
- » Aesthetic ultra-thin bezel for seamless panel mount installation
- » Wide range 9V~36V DC input
- » HDMI™ / DisplayPort / VGA flexible video input solution
- » Projected capacitive multi-touch and resistive single touch options
- » Wide temperature support

Specifications

| | |
|---------------------------------|---|
| Display | |
| LCD Size | 21.5"(16:9) |
| Brightness(cd/m2) | 250 |
| Max Resolution | 1920 (W) x 1080 (H) |
| Contrast Ratio | 1000:1 |
| Backlight MTBF(hrs) | 30000 |
| I/O Interface | |
| I/O Ports and Switches | 1 x VGA (DB-15) |
| | 1 x HDMI™ (F17A only) |
| | 1 x DisplayPort1.1 |
| | 1 x USB 2.0 (touch) |
| | 1 x RS-232 (reserved for resistive touch ATO) |
| | 1 x Lockable 12V DC jack |
| | 1 x 9V-36V terminal block |
| Power | |
| Power adapter | 9V~36V DC |
| Environment | |
| Operating Temperature | -10°C ~ 50°C |
| Humidity | 10% to 95% (non-condensing) |
| Storage Temperature | -20°C ~ 60°C |
| IP Level | IP 65 compliant front panel |
| Physical Characteristics | |
| Dimensions (LxWxH) (mm) | 358.4 x 550.4 x 49.1 |
| Cutout Dimensions | 340 x 532 |
| Weight | |
| Weight | 6.3 / 9.6 |
| LCD | |
| LCD Color | 16.7M |
| Pixel Pitch (mm) | 0.28 x 0.28 |
| Viewing Angle (H-V) | 170° / 160° |
| Touch | |
| Touch Screen | 2-point projected capacitive touch window/ EETI EXC7200 |

Ordering Information

21.5" 250 cd/m² FHD LCD monitor, Aluminum die casting front panel, Black color, W/ USB projected capacitive touch screen, 9 ~36V DC input, Powder paint, R31

Packing List

| | |
|---------------|---------------|
| 1 x Touch Pen | 1 x USB Cable |
| 1 x VGA Cable | |