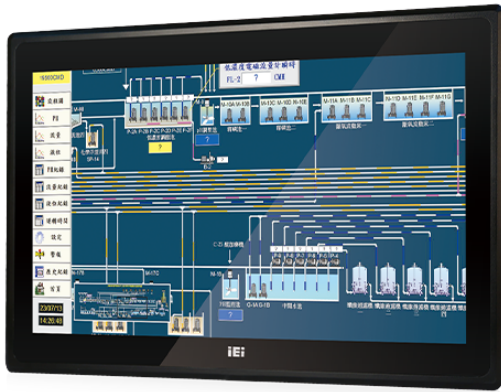


# DM-F22A

17"~24" DM-F IP65 Industrial Monitor



## Features

- » Robust IP65 aluminum front bezel
- » Aesthetic ultra-thin bezel for seamless panel mount installation
- » Wide range 9V~36V DC input
- » HDMI™ / DisplayPort / VGA flexible video input solution
- » Projected capacitive multi-touch and resistive single touch options
- » Wide temperature support

## Specifications

Display	
LCD Size	21.5"(16:9)
Brightness(cd/m2)	250
Max Resolution	1920 (W) x 1080 (H)
Contrast Ratio	1000:1
Backlight MTBF(hrs)	30000
I/O Interface	
I/O Ports and Switches	1 x VGA (DB-15)
	1 x HDMI™ (F17A only)
	1 x DisplayPort1.1
	1 x USB 2.0 (touch)
	1 x RS-232 (reserved for resistive touch ATO)
	1 x Lockable 12V DC jack
	1 x 9V-36V terminal block
Power	
Power adapter	9V~36V DC
Environment	
Operating Temperature	-10°C ~ 50°C
Humidity	10% to 95% (non-condensing)
Storage Temperature	-20°C ~ 60°C
IP Level	IP 65 compliant front panel
Physical Characteristics	
Dimensions (LxWxH) (mm)	358.4 x 550.4 x 49.1
Cutout Dimensions	340 x 532
Weight	
Weight	6.3 / 9.6
LCD	
LCD Color	16.7M
Pixel Pitch (mm)	0.28 x 0.28
Viewing Angle (H-V)	170° / 160°
Touch	
Touch Screen	2-point projected capacitive touch window/ EETI EXC7200

## Ordering Information

21.5" 250 cd/m<sup>2</sup> FHD LCD monitor, Aluminum die casting front panel, Black color, W/ USB projected capacitive touch screen, 9 ~36V DC input, Powder paint, R31

## Packing List

1 x Touch Pen	1 x USB Cable
1 x VGA Cable	