



2015Q3 Financial Results Investors Meeting

2015/11/26

Disclaimer

- IEI Integration's statements of its current expectations are forward-looking statements subject to significant risks and uncertainties and actual results may differ materially from those contained in the forward-looking statements.
- Except as required by law, we undertake no obligation to update any forward-looking statement, whether as a result of new information, future events, or otherwise.

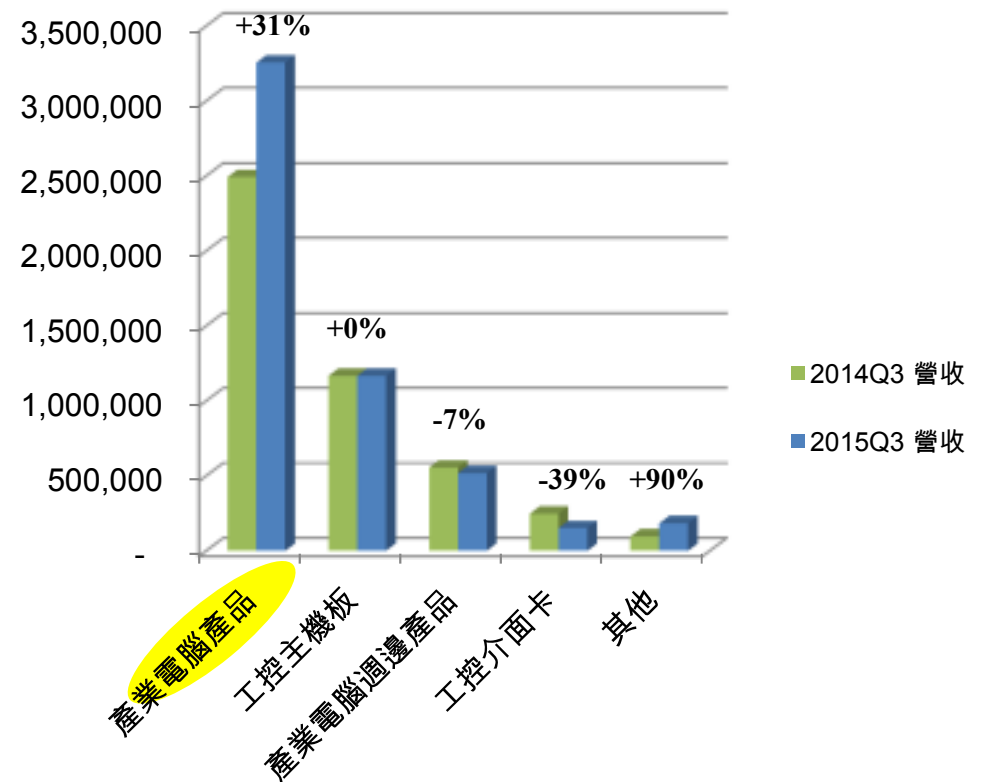
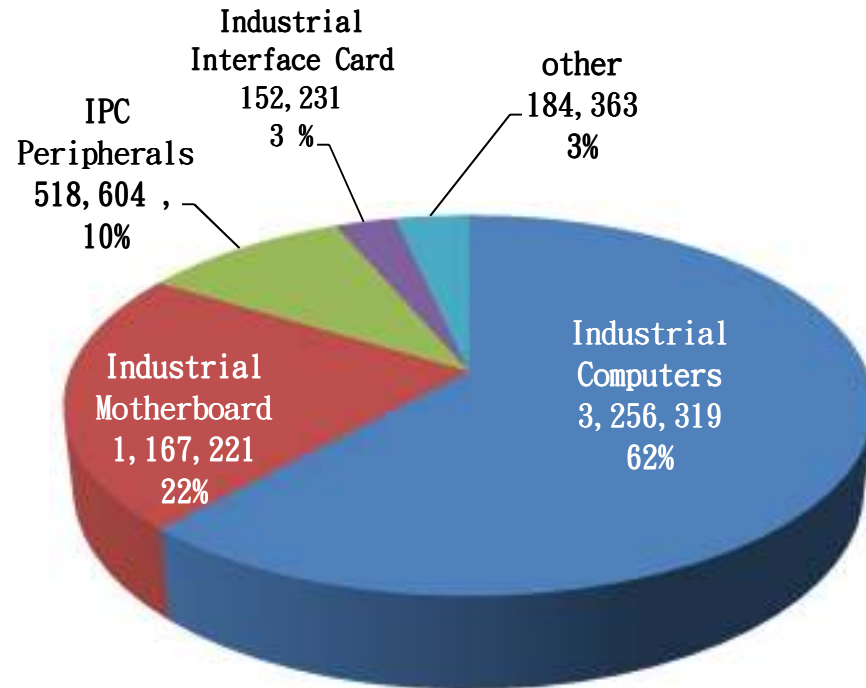
2015Q3 Financial Result-Consolidated

Amounts in NTD thousands

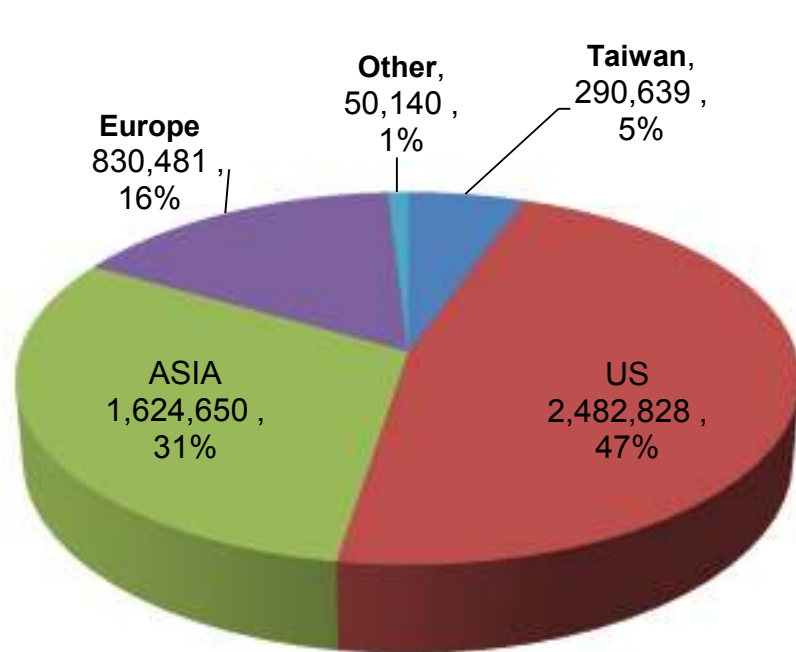
Income Statement	3Q15	3Q14	YoY	2Q15	QoQ
Net Sales	1,585,013	1,930,000	-18%	2,004,333	-21%
Gross Profit (realized)	590,513	583,400	1%	675,113	-13%
Gross Margin	37%	30%	24%	34%	11%
Operating Expense	302,264	358,605	-16%	308,828	-2%
Operating Income	288,249	224,795	28%	366,285	-21%
Other Net Income	51,188	219,875	-77%	98,756	-48%
Income Before Tax	339,437	444,670	-24%	465,041	-27%
Net Income	288,890	373,616	-23%	324,720	-11%
EPS(A/T)	0.88	1.14	-23%	0.99	-11%

2015Q3 Revenues by Product Lines-Consolidated

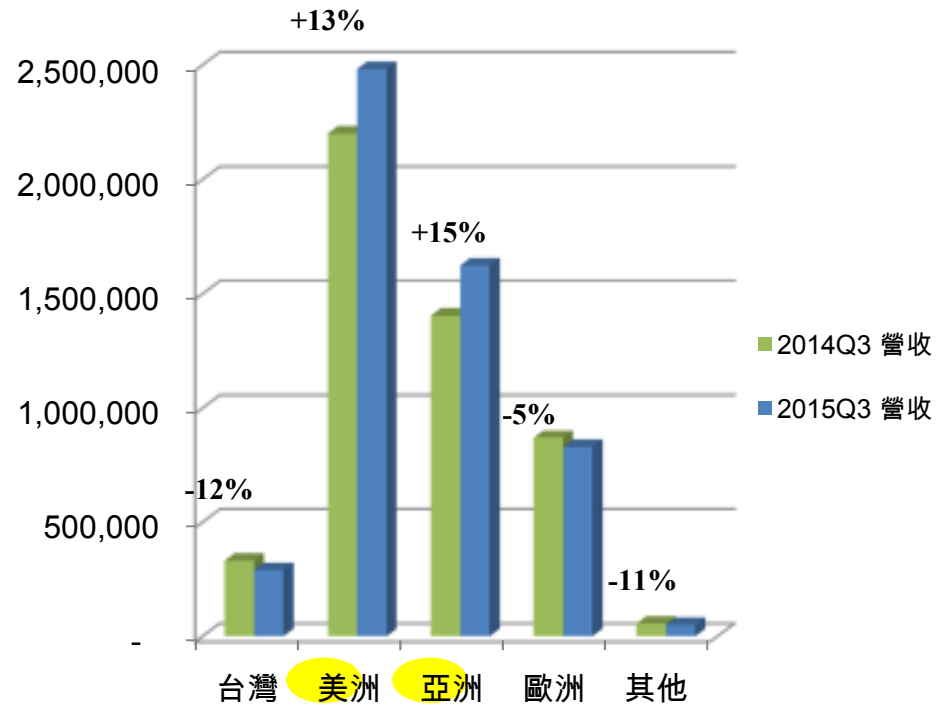
Amounts in NTD thousands



2015Q3 Revenues by Markets-Consolidated



Amounts in NTD thousands



2011~2014 & 2015Q3 IEI Summary-Consolidated

Amounts in NTD thousands

Income Statement	2011	2012	2013	2014	2015Q3
Net Sales	7,208,031	5,512,365	4,890,416	6,371,416	5,278,738
Gross Profit	2,095,783	1,849,700	1,567,226	2,023,390	1,800,224
Gross Margin	29%	33%	32%	32%	34%
Operating Expense	1,327,090	1,235,835	1,155,448	1,338,353	916,539
Operating Income	768,693	613,924	411,669	685,037	883,571
Other Net Income	797,852	471,444	960,537	1,084,642	330,455
Income Before Tax	1,566,545	1,085,368	1,372,206	1,769,679	1,214,026
Net Income	1,374,675	1,008,221	1,115,868	1,480,757	948,471
EPS(A/T)	6.07	3.26	3.41	4.51	2.89

2011~2014 & 2015Q3 Working Capital-Consolidated

Amounts in NTD thousands

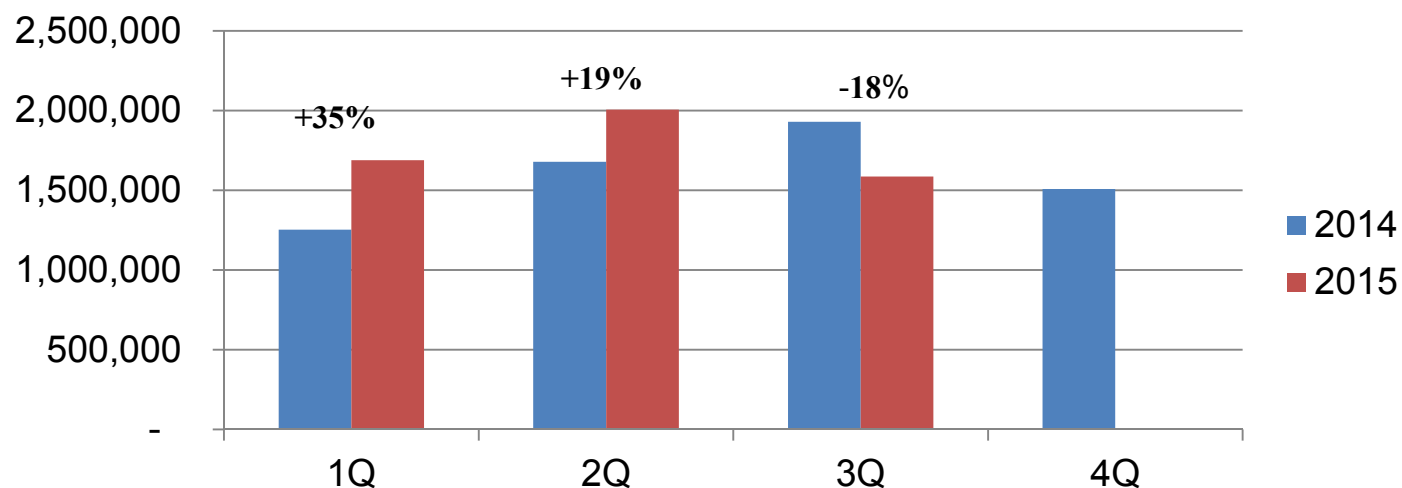
	2011	2012	2013	2014	2015Q3
Cash Position	3,154,034	2,096,167*	2,264,617*	3,007,440*	3,318,849*
Account Receivable	561,981	695,943	830,385	753,635	955,392
DSO(Days)	32	42	57	45	44
Inventory	809,012	886,287	868,124	963,034	947,732
DOH(Days)	80	84	96	77	75
Account Payable	1,408,663	1,195,506	1,286,272	1,467,794	1,289,890
Days	92	130	175	116	109

*依據IFRS對現金及約當現金重分類

2015/01~10 IEI Revenue-Consolidated

Amounts in NTD thousands

2015 01	2015 02	2015 03	2015 1Q	2015 04	2015 05	2015 06	2015 2Q
635,865	414,335	637,865	1,688,065	650,494	787,139	568,027	2,005,660
2015 07	2015 08	2015 09	2015 3Q	2015 10	2015 11	2015 12	2015 4Q
494,856	558,490	531,667	1,585,013	519,220			



iEi GROUP
威強電集團



<http://www.ieiworld.com>
stock@iei.com.tw