



IEI Integration Corp.

(Stock Code : 3022)

3Q22 Earnings Conference

Dec 14, 2022

IEI[®]

Disclaimer

- IEI Integration's statements of its current expectations are forward-looking statements subject to significant risks and uncertainties and actual results may differ materially from those contained in the forward-looking statements.
- Except as required by law, we undertake no obligation to update any forward-looking statement, whether as a result of new information, future events, or otherwise.



3Q22 Financial Results

Income Statement (Consolidated)

Amount: NT\$ Thousand

	2022Q3	2021Q3	2022Q1~Q3	2021Q1~Q3	QoQ	YoY
Net Sales	2,543,933	1,566,489	5,749,592	4,612,863	62%	25%
COGS	1,565,655	1,040,547	3,642,574	2,985,183	50%	22%
Gross profit	978,278	525,942	2,107,018	1,627,680	86%	29%
Gross margin	38%	34%	37%	35%		
Operating expenses	437,613	348,607	1,100,915	1,044,189	26%	5%
Net operating income	540,665	177,335	1,006,103	583,491	205%	72%
Operating margin	21%	12%	17%	11%		
Non-operating income & expenses	261,619	88,556	519,668	281,305	195%	85%
Net income	611,576	210,691	1,186,964	691,894	190%	72%
EPS (NT\$)	3.46	1.19	6.73	3.92		



Balance Sheet (Consolidated)

Amount: NT\$ Thousand

	2022/9/30	2021/12/31	2021/9/30
Current assets	8,804,564	6,837,699	6,618,022
Non-current assets	3,995,642	4,758,399	4,673,269
Total assets	12,800,206	11,596,098	11,291,291
Current liabilities	2,823,183	2,605,162	2,545,917
Non-current liabilities	995,105	953,487	956,260
Total liabilities	3,818,288	3,558,649	3,502,177
Capital stock	1,765,978	1,765,978	1,765,978
Additional paid-in capital	820,437	820,325	820,325
Retained earnings	6,795,994	6,137,966	5,951,928
Other equity interest	(400,706)	(687,892)	(749,742)
Non-controlling interests	215	1,072	625
Total equity	8,981,918	8,037,449	7,789,114

Financial Highlights (Consolidated)

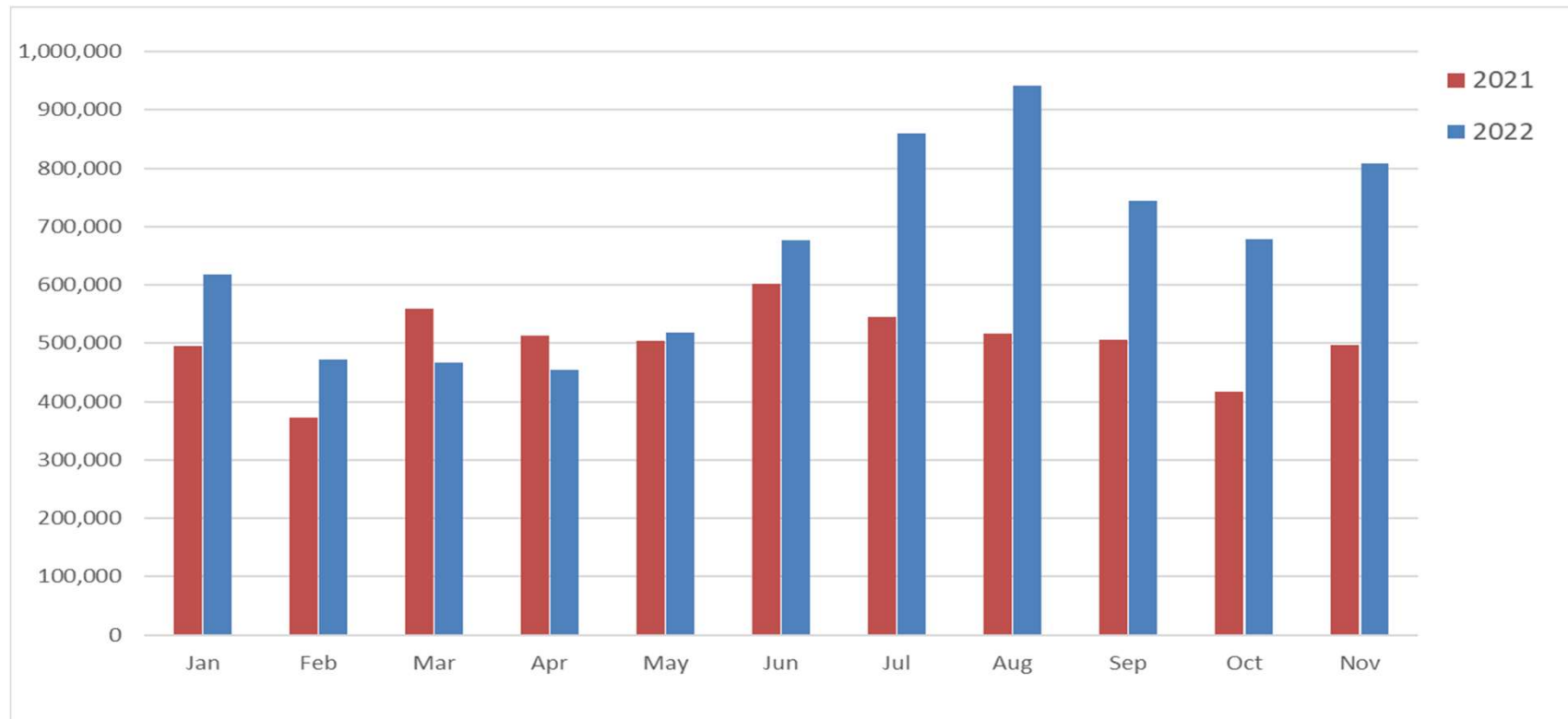
Amount: NT\$ Thousand ; day

	2022/9/30	2021/12/31	2021/9/30
Cash and Cash equivalents & financial asset	5,109,153	4,746,571	4,489,400
Accounts Receivable	1,308,748	1,000,954	1,066,342
Inventory	1,854,249	1,530,051	1,556,103
Property, plant and equipment	1,256,295	1,209,310	1,271,146
Days of Sales Outstanding	55	62	65
Days on Hand	127	116	122
Return on Equity	13.95%	11.07%	9.00%

2022 Monthly Revenue (Consolidated)

Amount: NT\$ Thousand

	Jan	Feb	Mar	1Q	Apr	May	Jun	2Q	Jul	Aug	Sep	3Q	Oct	Nov	YTD
2022	618,164	471,425	466,483	1,556,073	454,487	518,773	676,327	1,649,586	859,297	941,034	743,602	2,543,933	678,522	807,780	7,235,894
2021	494,980	372,770	558,842	1,426,592	513,413	503,746	602,623	1,619,782	544,689	516,569	505,231	1,566,489	417,331	496,134	5,526,328
YoY	25%	26%	-17%	9%	-11%	3%	12%	2%	58%	82%	47%	62%	63%	63%	31%

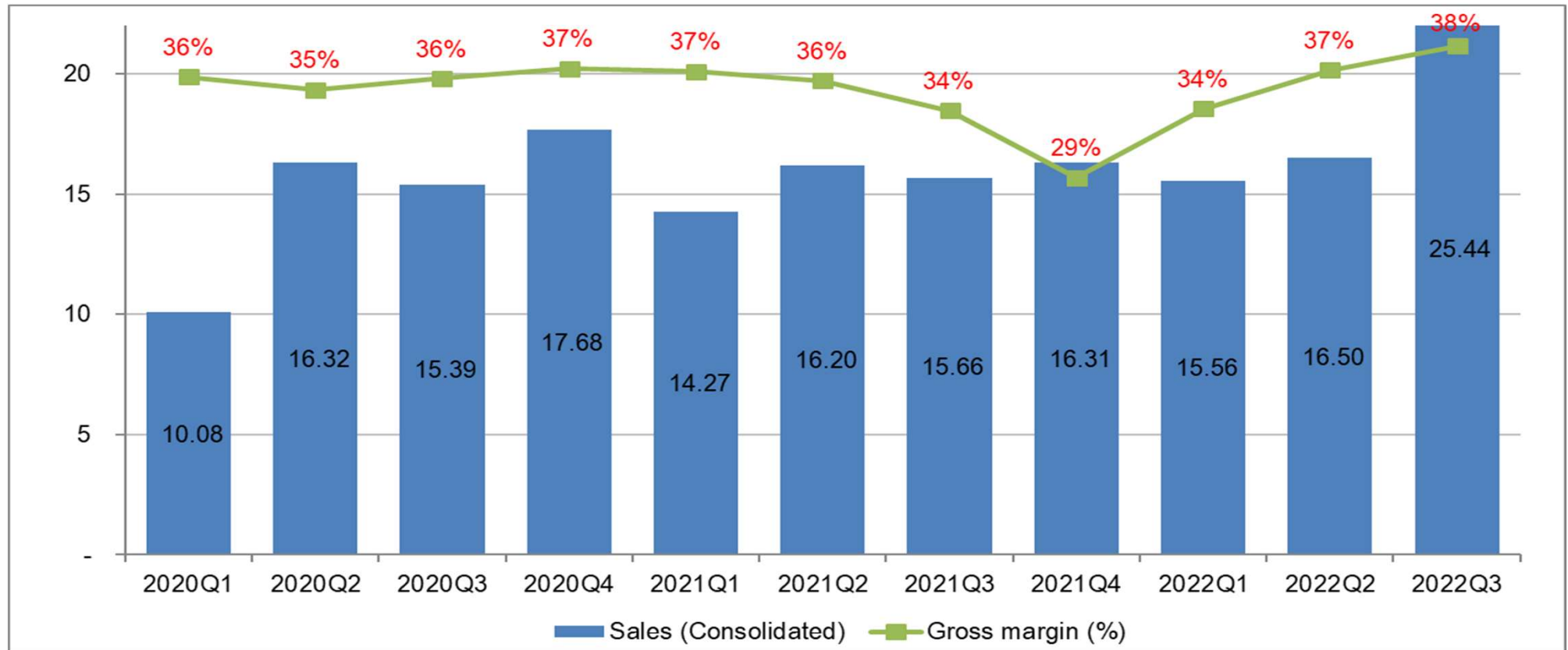


@2022 IEI Integration Corp. CONFIDENTIAL. ALL RIGHTS RESERVED



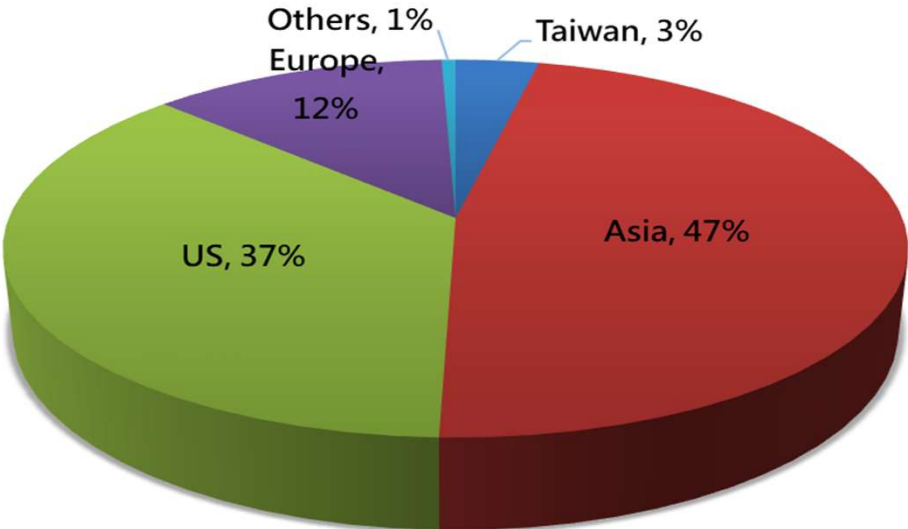
Quarterly Revenue & Gross Margin

Amount: NT\$ 100 million

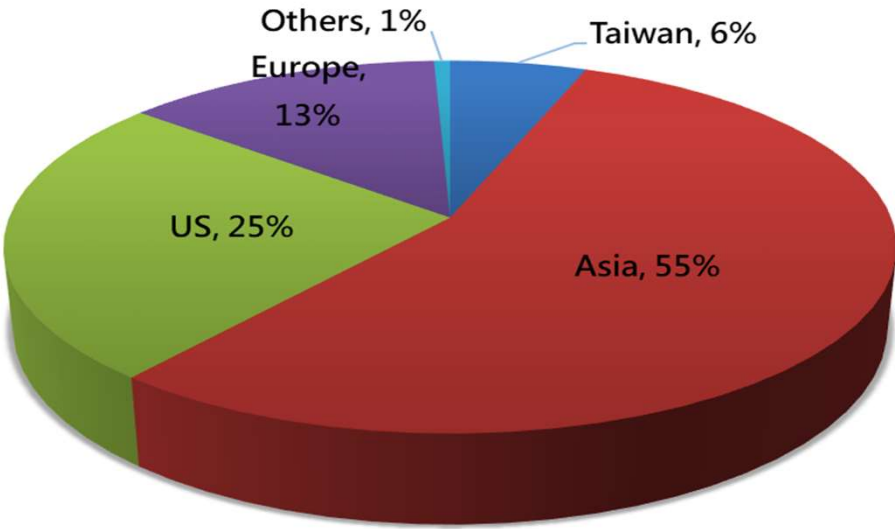


Revenue by Region

2022 Q1~Q3

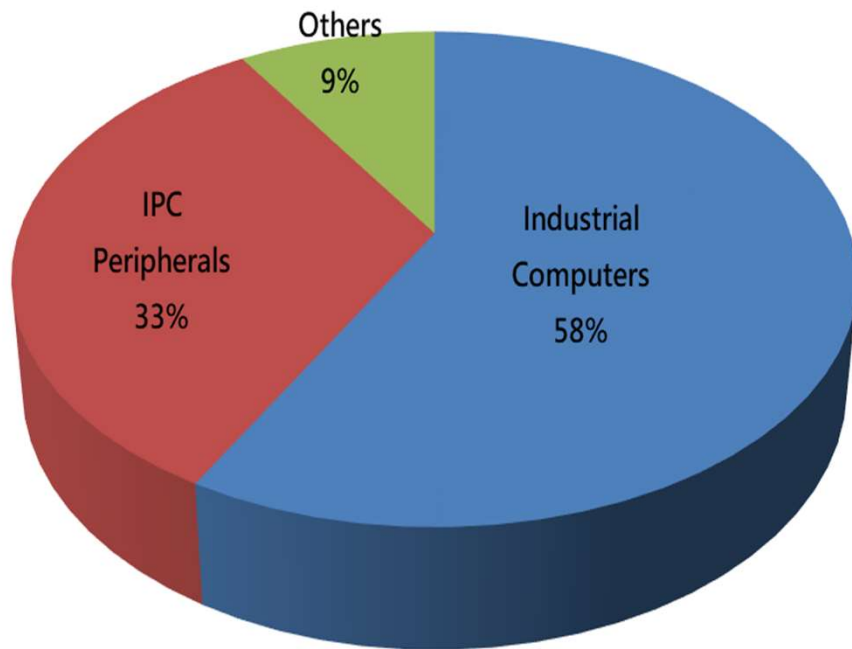


2021 Q1~Q3

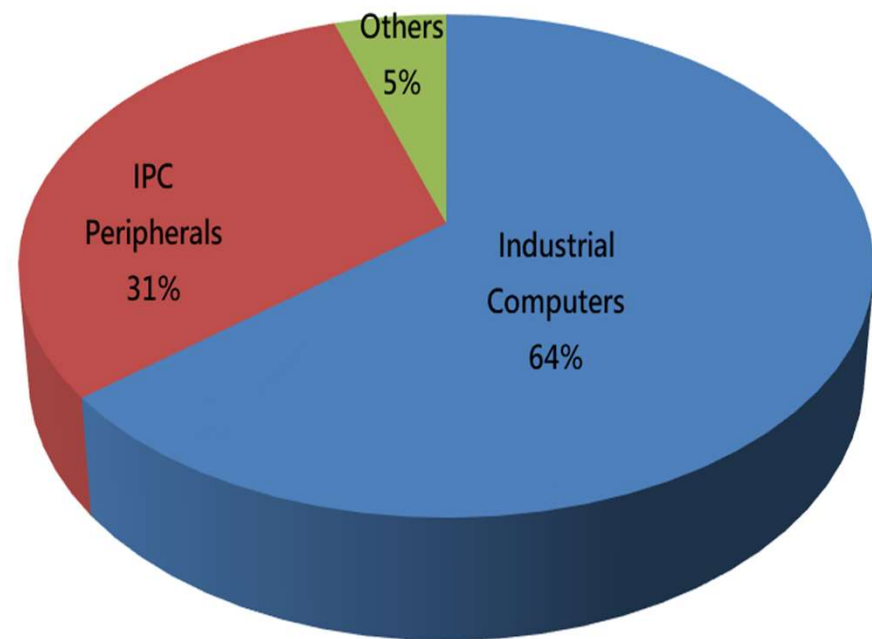


Revenue by Product Lines

2022 Q1~Q3



2021 Q1~Q3





Company operating outlook

Core Competencies

**ODM
Customization
Services**

**System
Integration
Capability**

**New Technology
and Innovation**

**Healthcare/AI/
Networking/Storage
Domain Knowledge**

**Global Logistics &
Supply Chain
Management**



Thanks for your attention

iEi® **Integration Corp.**

Create the Intelligent Life, Beyond Your Imagination

