A 3D rendering of several server racks in shades of blue and purple. The racks are arranged in a perspective view, with some in the foreground and others receding into the background. One of the racks in the middle ground has a large, glowing '5G' logo on its side. The background is a dark blue gradient with faint grid lines and glowing light effects.

# IEI Integration Corp. (Stock Code : 3022) 2021Q3 Results

Nov 26, 2021



...NETWORKING...5G...

AIoT...Edge Computing...

# Disclaimer

- IEI Integration's statements of its current expectations are forward-looking statements subject to significant risks and uncertainties and actual results may differ materially from those contained in the forward-looking statements.
- Except as required by law, we undertake no obligation to update any forward-looking statement, whether as a result of new information, future events, or otherwise.

# Income Statement (Consolidated)

Amount: NT\$ Thousand

	2021 Q1-Q3	2021 Q3	2021 Q2	2021 Q1	2020 Q1-Q3	2020 Q3	QoQ	YoY
Net Sales	4,612,863	1,566,489	1,619,782	1,426,592	4,179,245	1,539,011	2%	10%
COGS	2,985,183	1,040,547	1,039,290	905,346	2,687,389	984,911	6%	11%
Gross profit	1,627,680	525,942	580,492	521,246	1,491,856	554,100	-5%	9%
<b>Gross margin</b>	<b>35%</b>	<b>34%</b>	<b>36%</b>	<b>37%</b>	<b>36%</b>	<b>36%</b>		
Operating expenses	1,044,189	348,607	380,946	314,636	848,677	287,480	21%	23%
Net operating income	583,491	177,335	199,546	206,610	643,179	266,620	-33%	-9%
<b>Operating margin</b>	<b>11%</b>	<b>12%</b>	<b>12%</b>	<b>15%</b>	<b>15%</b>	<b>18%</b>		
Non-operating income & expenses	281,305	88,556	79,230	113,519	315,097	64,528	37%	-11%
Net income	691,894	210,691	223,661	257,542	731,262	256,885	-18%	-5%
<b>EPS</b>	<b>3.92</b>	<b>1.19</b>	<b>1.27</b>	<b>1.46</b>	<b>4.14</b>	<b>1.45</b>		

# Balance Sheet (Consolidated)

Amount: NT\$ Thousand

	2021/9/30	2021/6/30	2021/3/31	2020/12/31
Current assets	6,618,022	7,003,105	6,517,855	6,238,063
Non-current assets	4,673,269	4,669,400	4,759,947	4,611,816
<b>Total assets</b>	<b>11,291,291</b>	<b>11,672,505</b>	<b>11,277,802</b>	<b>10,849,879</b>
Current liabilities	2,545,917	2,756,588	2,503,040	2,356,612
Non-current liabilities	956,260	938,984	922,423	898,581
<b>Total liabilities</b>	<b>3,502,177</b>	<b>3,695,572</b>	<b>3,425,463</b>	<b>3,255,193</b>
Capital stock	1,765,978	1,765,978	1,765,978	1,765,978
Additional paid-in capital	820,325	821,570	819,341	819,341
Retained earnings	5,951,928	6,094,189	5,870,268	5,612,418
Other equity interest	-749,742	-705,673	-604,377	-604,488
Non-controlling interests	625	869	1,129	1,437
<b>Total equity</b>	<b>7,789,114</b>	<b>7,976,933</b>	<b>7,852,339</b>	<b>7,594,686</b>

# Financial Highlights (Consolidated)

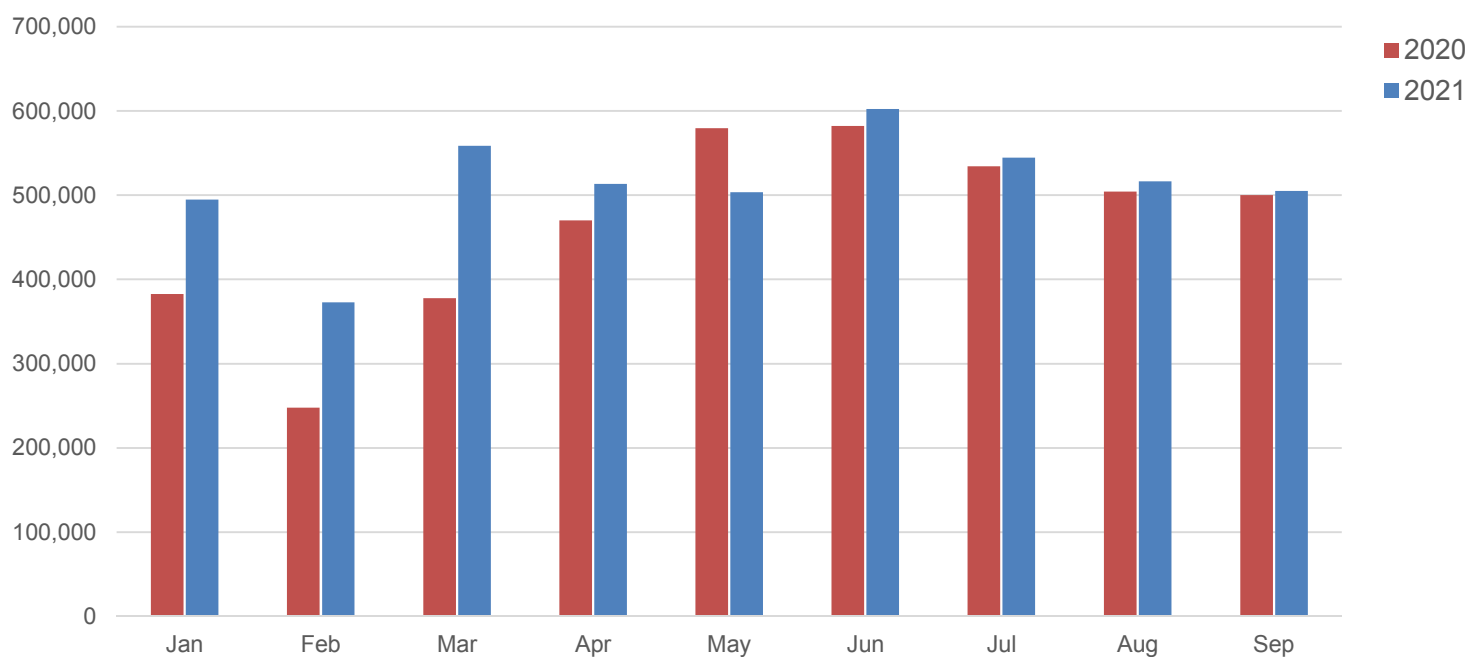
Amount: NT\$ Thousand ; day

	2021/9/30	2021/6/30	2021/3/31	2020/12/31
Cash equivalents & financial asset	4,489,400	4,848,656	4,916,579	4,644,897
Accounts Receivable	1,066,342	1,019,943	924,122	1,135,176
Inventory	1,556,103	1,518,551	1,260,990	1,102,458
Property, plant and equipment	1,271,146	1,219,099	1,235,212	1,181,115
Days of Sales Outstanding	65	65	66	58
Days on Hand	122	123	119	96
Return on Equity	9.00%	6.18%	3.33%	13.86%

# 2021 Monthly Revenue (Consolidated)

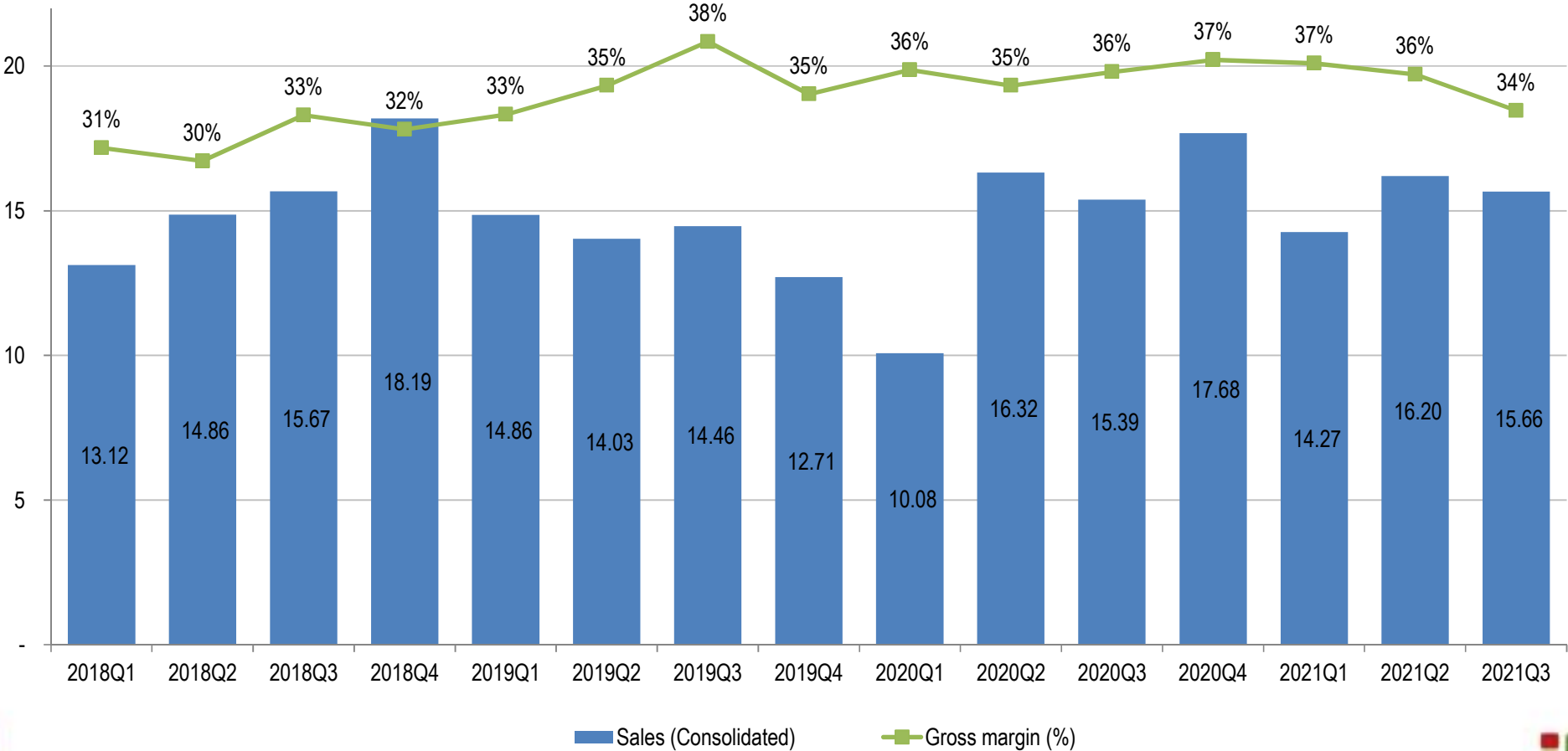
Amount: NT\$ Thousand

	Jan	Feb	Mar	1Q	Apr	May	Jun	2Q	Jul	Aug	Sep	3Q	YTD
2021	494,980	372,770	558,842	1,426,592	513,413	503,746	602,623	1,619,782	544,689	516,569	505,231	1,566,489	4,612,863
2020	382,736	247,603	377,797	1,008,136	470,153	579,592	582,353	1,632,098	534,352	504,448	500,211	1,539,011	4,179,245
YoY	29%	51%	48%	42%	9%	-13%	3%	-1%	2%	2%	1%	2%	10%



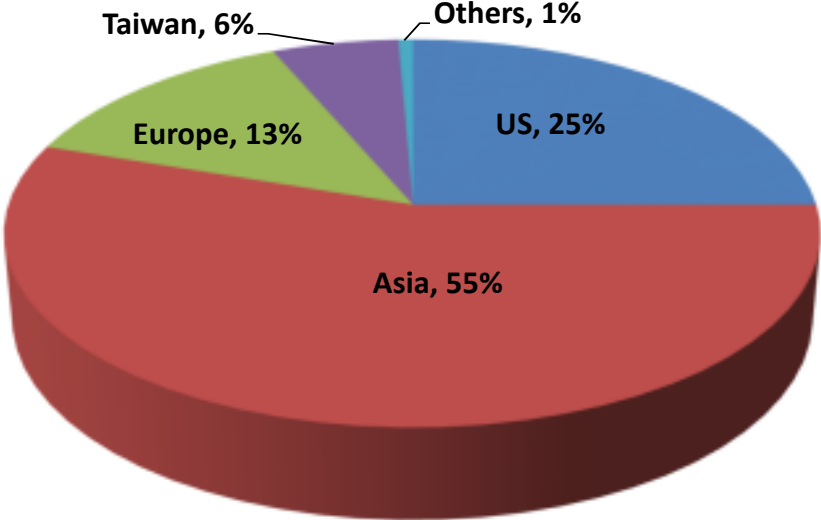
# Quarterly Revenue & Gross Margin

Amount: NT\$ 100 million

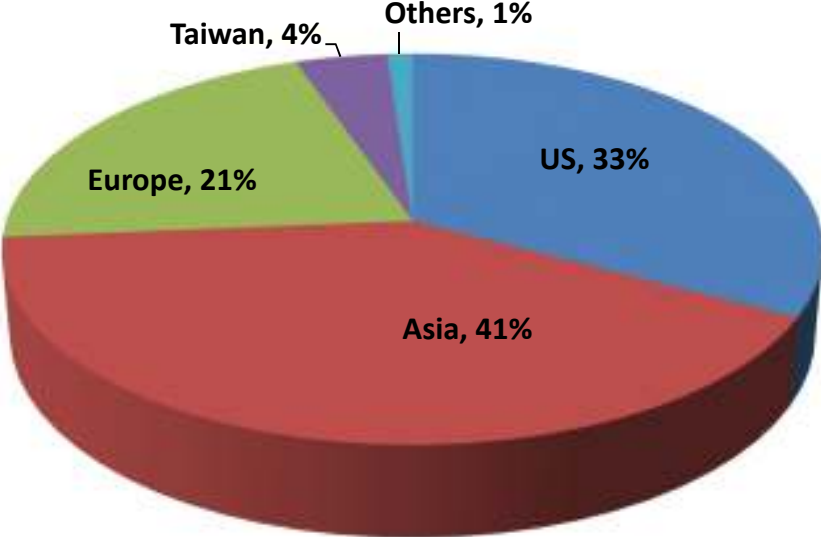


# Revenue by Region

## 2021 Q1~Q3



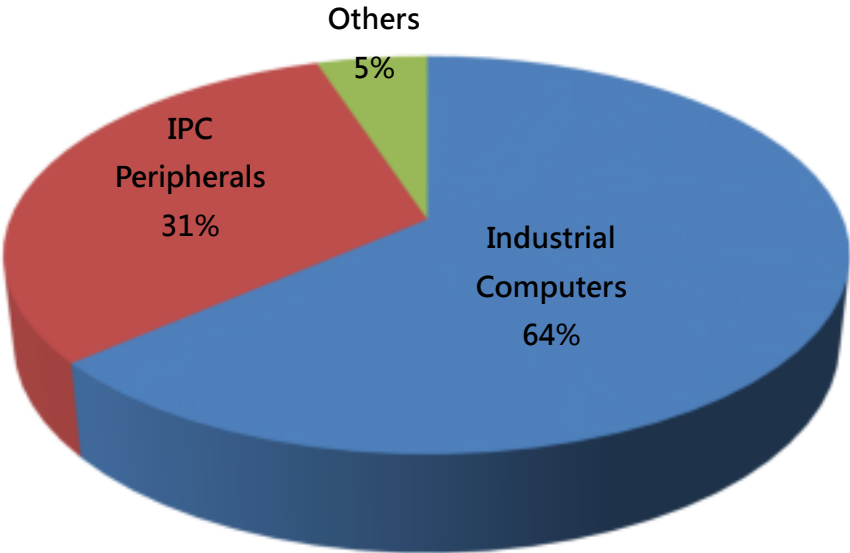
## 2020 Q1~Q3



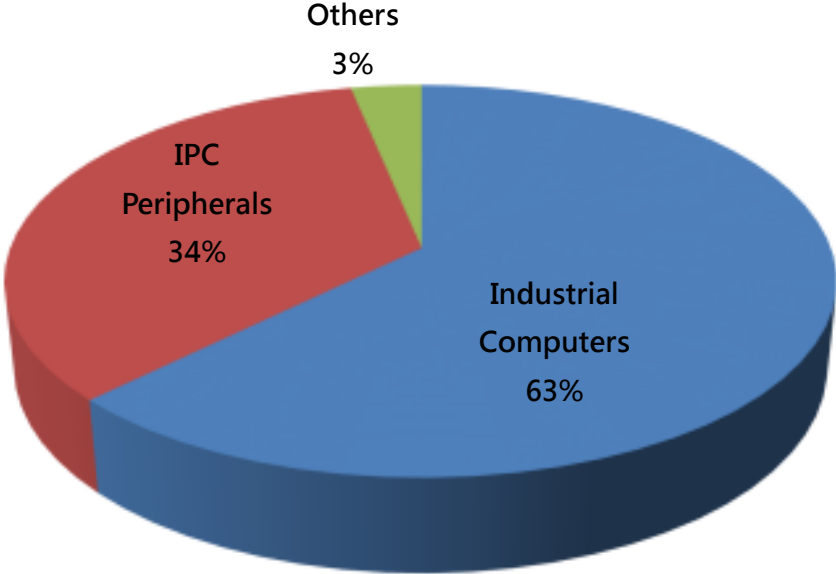


# Revenue by Product Lines

## 2021 Q1~Q3



## 2020 Q1~Q3



5G

**Thanks for  
your attention**



**iEi.**