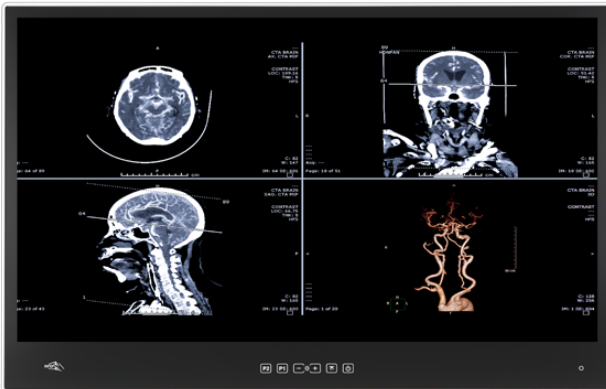


# POCi-W24C-RPL

## Medical Panel PC



### Features

- » Dual reading light
- » Chemical etching AG coating
- » Modular PCIe x4 expansion slot
- » Aluminum front bezel (IP66) & PC/ABS rear cover
- » FHD IPS panel with optional DICOM preset module
- » 13th Generation Intel® Raptor Lake-P platform
- » Built-in medical-grade power supply

### Specifications

Display	
LCD Size	23.8"
LCD Resolution	1920 x 1080
LCD Brightness (cd/m <sup>2</sup> )	350
LCD Contrast Ratio	1000:1
LCD Color	16.7M (RGB 8-bit)
LCD Pixel Pitch (mm)	0.2745 (H) x 0.2745 (V)
LCD Viewing Angle (H-V)	178°/178°
LCD Backlight MTBF	30000
Touch Screen	PCAP
Touch Controller	EETI
Touch Surface Hardness	6H
Touchscreen Coating	Chemical etching AG
System	
Processor	13th Gen Intel® Core™ i5-1340PE/ i7-1370PE (Raptor Lake-P)
Supported OS	Windows 11; Linux Ubuntu
Network	
Ethernet Controller	Intel® I226-V
Wi-Fi	IEEE 802.11 a/b/g/n/ac/ax, Intel® Wi-Fi 6E AX210
Bluetooth	Bluetooth V5.2
Storage	
Storage	2 x M.2 2280 M key (PCIe/ SATA) with RAID
RAM	2 x 262-pin 4800MT/s dual-channel DDR5 SO-DIMM slots (system max. 64GB)
Expansion Slots	
Expansion Slots	1 x PCIe x2
	1 x M.2 2230 A-E key (PCIe+USB)
	2 x M.2 2260/80 B-M key (PCIe/ SATA)
Audio	
Speaker	2 x 2W speaker
Microphone	1 x Digital mic
I/O Interface	
Side I/O	2 x USB 2.0 port
Rear I/O	1 x AC jack
	1 x HDMI output
	1 x USB Type-C (DP + USB 5V/3A)

	1 x Combo audio-out/mic-in
	2 x RS-232
	2 x 2.5GbE LAN port
	4 x USB 3.2 Gen 2 (10Gb/s) port
<b>Indicator&amp;Buttons</b>	
Buttons	1 x Power on/off
	1 x AT/ATX switch
	1 x Reset button
	1 x Clear CMOS Button
Indicators	1 x Power indicator
<b>Other Features</b>	
OSD Function	1 x Power on/off
	1 x Reading light on/off
	1 x Brightness up
	1 x Brightness down
	1 x LCD & touch lock on/off
	1 x DICOM mode app on/off (optional)
<b>Physical Characteristics</b>	
Thermal	Fanless
Construction Material	ABS+PC plastic
Mounting	Wall, Stand and Arm; VESA 75/100 compliant
Weight (Net) (kg)	8.1 kg
Dimensions (LxWxH) (mm)	567 x 370.6 x 63.9 mm
<b>Power</b>	
Input	85V – 264V AC input
Built-in Power Supply	150W, 85V – 264V AC, medical power supply
<b>Environment</b>	
Operating Temperature	0°C ~ 40°C
Storage Temperature	-20°C ~ 60°C
Humidity	10% ~ 90% (non-condensing)
Vibration	1G
Operating Shock	5G peak acceleration (11ms duration)
Non-operating shock	15G peak acceleration (11ms duration)
IP Level	Front: IP66
<b>Certifications</b>	
Safety & EMC	CE, FCC Class B Part18, UL 60601-1, IEC/EN 60601-1, IEC/EN 60601-1-2

## Ordering Information

POCi-W24C-RPL-i7/PC-R10	23.8" 350cd/m <sup>2</sup> FHD medical panel PC with 13th generation 10nm Intel®Raptor Lake-P Core™ i7-1370PE 4.8GHz on-board processor,802.11a/b/g/n/ac/ax Wi-Fi 6E module,PCAP touchscreen w/ AG coating,R10
POCi-W24C-RPL-i7/PC/DI-R10	23.8" 350cd/m <sup>2</sup> FHD medical panel PC with 13th generation 10nm Intel®Raptor Lake-P Core™ i7-1370PE 4.8GHz on-board processor,802.11a/b/g/n/ac/ax Wi-Fi 6E module,PCAP touchscreen w/ AG coating,DICOM,R10
POCi-W24C-RPL-i5/PC-R10	23.8" 350cd/m <sup>2</sup> FHD medical panel PC with 13th generation 10nm Intel®Raptor Lake-P Core™ i5-1340PE 4.5GHz on-board processor,802.11a/b/g/n/ac/ax Wi-Fi 6E module,PCAP touchscreen w/ AG coating,R10

## Packing List

1 x Power Cord (C13)	
----------------------	--