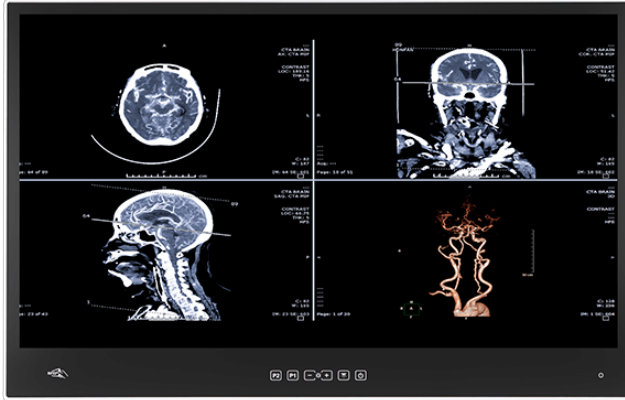


POCi-W24C-ULT5

24" Medical Panel PC with 8th Generation Intel® mobile ULT Core™ i7/i5 processor



Features

- » 14nm 8th generation Intel® Whiskey Lake U platform
- » Aluminum front bezel (IP66) & PC/ABS rear cover
- » Chemical etching AG coating
- » Modular PCIe x4 expansion slot
- » Dual reading light
- » FHD IPS panel with optional DICOM preset module

Specifications

Form factor	
Form factor	<ul style="list-style-type: none"> » 14nm 8th generation Intel® Whiskey Lake U platform » Aluminum front bezel (IP66) & PC/ABS rear cover » Chemical etching AG coating » Modular PCIe x4 expansion slot » Dual reading light » FHD IPS panel with optional DICOM preset module
Display	
LCD Size	23.8" (16:9)
Brightness(cd/m2)	350
Max Resolution	1920 (W) X 1080 (H)
Contrast Ratio	1000:1
Backlight MTBF(hrs)	30,000 (LED backlight)
System	
Cooling method / System Fan	fanless
CPU	Intel® Core™ i7-8665UE (Whiskey Lake ULT platform) Intel® Core™ i5-8365UE (Whiskey Lake ULT platform)
HDD	1 X 2.5" accessible SATA HDD/SSD bay
SSD	1X M.2 2242/60/80 M key (PCIe x4)
Communication	
Bluetooth	Bluetooth V5.0 (M.2 2230)
Wi-Fi	IEEE 802.11 ax 2T2R module (Wi-Fi 6 Module)
I/O Interface	
Ethernet	1 X Isolated Gigabit LAN (I219 supports Intel® vPro) 1 X Isolated Gigabit LAN (I211)
Audio	1 X Combo audio-out / mic-in
Expansion	1 X PCIe x4 3S3P Li-ion battery pack, 11.1V, 7800mAh (Optional) 150W, 85 ~264VAC, medical power supply (Optional)
USB	4 X USB 3.2 Gen 2 port 2 X USB 2.0 port (side)
RAM	DDR4 SO-DIMM up to 64GB

Power	
Input	19V DC input
Power adapter	150W medical power adapter
Power Supply	150W, 85 ~264VAC, medical power supply (Optional)
Environment	
Operating Temperature	0°C ~ 40°C
Operating Vibration	1G
Operating Shock	5G peak acceleration (11ms duration)
Safety & EMC	CE, FCC Class B Part18
	EN 60601-1:2006/A1:2013 (Edition 3.1)
	EN 60601-1-2: 2015 (Edition 4.0)
Humidity	10% ~ 95% (non-condensing)
Storage Temperature	-20°C ~ 60°C
IP Level	Front: IP66
Physical Characteristics	
Color	White
Mounting	Wall, Stand and Arm VESA 75/100
Dimensions (LxWxH) (mm)	507.5 X 335.5 X 64.5
Net Weight	8.1 kg
Construction	Front bezel: Aluminum die-casting
	Rear cover: ABS+PC plastic with anti-bacterial material
Touch	
Touch Screen	Projected capacitive type with 10-point multi-touch
	Chemical etching AG
Touch Controller	EETI (80H84)
Other Features	
Audio	2 X 3W speaker
TPM	TPM-IN03-R10 (Optional)
OSD Function	
OSD Function	1 x Power on/off
	1 x Reading light on/off
	1 x Backlight brightness up
	1 x Backlight brightness down
	1 x Clean mode on/off
	1 x DICOM mode app on/off (optional)
I/O Interface	
I/O Interface	AT/ATX switch
	Audio
	DC Input Jack
	HDMI
	LAN
	Line in
	Mic
	Power In
	Power Switch
	Reset Button
	RS-232
	Speaker
	Touchscreen
	USB 2.0
	USB 3.2 Gen1x1
	WIFI

Ordering Information

POCi-W24C-ULT5-i7/PC/4G-R10 <i>* By order production</i>	23.8" 250cd/m ² FHD medical panel PC with 8th generation 14nm Intel® mobile Core™ i7-8665UE (15W) 1.7GHz on-board processor (ULT),one 4GB DDR4 RAM,802.11 ax Wi-Fi module,PCAP touchscreen w/ AG coating,microphone,R10
POCi-W24C-ULT5-i7/PC/4G-BP-R10 <i>* By order production</i>	23.8" 250cd/m ² FHD medical panel PC with 8th Gen 14nm Intel® mobile Core™ i7-8665UE (15W) 1.7GHz on-board processor (ULT),one 4GB DDR4 RAM,802.11 ax Wi-Fi module,PCAP touchscreen w/ AG coating,microphone,w/ built-in Power,R10
POCi-W24C-ULT5-i7/PC/4G-B-R10 <i>* By order production</i>	23.8" 250cd/m ² FHD medical panel PC with 8th generation 14nm Intel® mobile Core™ i7-8665UE (15W) 1.7GHz on-board processor (ULT),one 4GB DDR4 RAM,802.11 ax Wi-Fi module,PCAP touchscreen w/ AG coating,microphone,w/ battery,R10
POCi-W24C-ULT5-i5/PC/4G-R10	23.8" 250cd/m ² FHD medical panel PC with 8th generation 14nm Intel® mobile Core™ i5-8365UE (15W) 1.6GHz on-board processor (ULT),one 4GB DDR4 RAM,802.11 ax Wi-Fi module,PCAP touchscreen w/ AG coating,microphone,R10
POCi-W24C-ULT5-i5/PC/4G-BP-R10 <i>* By order production</i>	23.8" 250cd/m ² FHD medical panel PC with 8th Gen 14nm Intel® mobile Core™ i5-8365UE (15W) 1.6GHz on-board processor (ULT),one 4GB DDR4 RAM,802.11 ax Wi-Fi module,PCAP touchscreen w/ AG coating,microphone,w/ built-in Power,R10
POCi-W24C-ULT5-i5/PC/4G-B-R10 <i>* By order production</i>	23.8" 250cd/m ² FHD medical panel PC with 8th generation 14nm Intel® mobile Core™ i5-8365UE (15W) 1.6GHz on-board processor (ULT),one 4GB DDR4 RAM,802.11 ax Wi-Fi module,PCAP touchscreen w/ AG coating,microphone,w/ battery,R10

Packing List

1 X 150W medical power adapter	1 X European power cords, 183 CM, C13
--------------------------------	---------------------------------------