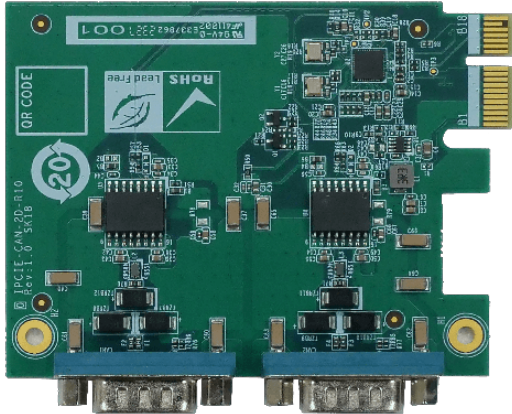


IPCIE-CAN-2D

PCIe card supports 2-Port CAN Bus with Isolation Protection, RoHs



Features

- » PCIe card supports 2 x Independent CAN ports
- » Up to 1 Mbps transmission speed
- » Support 16 MHz CAN controller frequency
- » Two CANBus (DB9) port module with isolating

Specifications

| | |
|--------------------------|--|
| Form Factor | |
| Form Factor | PCI Express® x1 |
| | Protocol: CAN 2.0 A/B |
| System | |
| Chipset | Fintek F81601 (PCIe to CAN), Chipanalog CA-IS3062 (CAN Transceiver) |
| Physical Characteristics | |
| Dimensions (LxWxH) (mm) | 70mm x 90mm |
| Net Weight | GW: 120g / NW: 80g |
| I/O Interface | |
| I/O Interface | 2 x CAN-bus/OBD-II : 2.0B port with isolation |
| Environment | |
| Operating Temperature | 0°C ~ 60°C |
| Storage Temperature | -30°C ~ 70°C |
| Humidity | 5% ~ 95%, non-condensing |
| Certifications | |
| Safety & EMC | CE/FCC compliant |
| Card Slot Interface | |
| PCIe | PCIe x1 |

Ordering Information

| | |
|------------------|--|
| IPCIE-CAN-2D-R10 | PCIe x1 card supports 2-Port CAN Bus with Isolation Protection, RoHs |
|------------------|--|

Packing List

| | |
|------------------------------------|------------------|
| 1 x IPCIE-CAN-2D card | 1 x IO Shielding |
| 1 x QIG (Quick Installation Guide) | |